



College-Wide Faculty Meeting Fall 2011

- Students
- Alumni & Friends
- Dean's Office
- College Events
- Departments
- Interdisciplinary Programs
- ROTC
- Research and Instruction Centers
- Giving Opportunities

2011 Annual Report



CSBS News and Events

- [Taking it to Capitol Hill: With all the recent media attention, suicide experts...](#)
- [How is your family saving in these hard economic times? Research economist Pam...](#)
- [Join fellow CSBS students in providing local neighborhoods a helping hand. Legac...](#)

Upcoming Events:

- [Sep 30: Globalization as a Challenge and Opportunity – World Bank Perspective](#)
- [Oct 27: Food for Thought: Utah Intergovernmental Roundtable Annual Summit](#)

Learn more about CSBS

- [Read our latest newsletter, *Connections*](#)
- [Become a fan of CSBS on Facebook](#)
- [Join the conversation on the CSBS Blog](#)
- [Follow us on Twitter](#)

CSBS on YouTube



A Closer Look



A college education can mean a lot of things to someone. In the case of Joy Johnson it's giving her the knowledge and skills for her dream career but it's also giving her an appreciation for family and changing the thinking of that same family.

Joy is the recipient of the Ralph and Julie Thomson Honor Roll Scholarship in the College of Social and Behavioral Science.

[»Read more about Joy's story](#)



[Students](#)

[Alumni & Friends](#)

[Dean's Office](#)

[College Events](#)

[Departments](#)

[Interdisciplinary Programs](#)

[ROTC](#)

[Research and Instruction
Centers](#)

[Giving Opportunities](#)

STAFF AND FACULTY RESOURCES

Presentations and Meeting Minutes

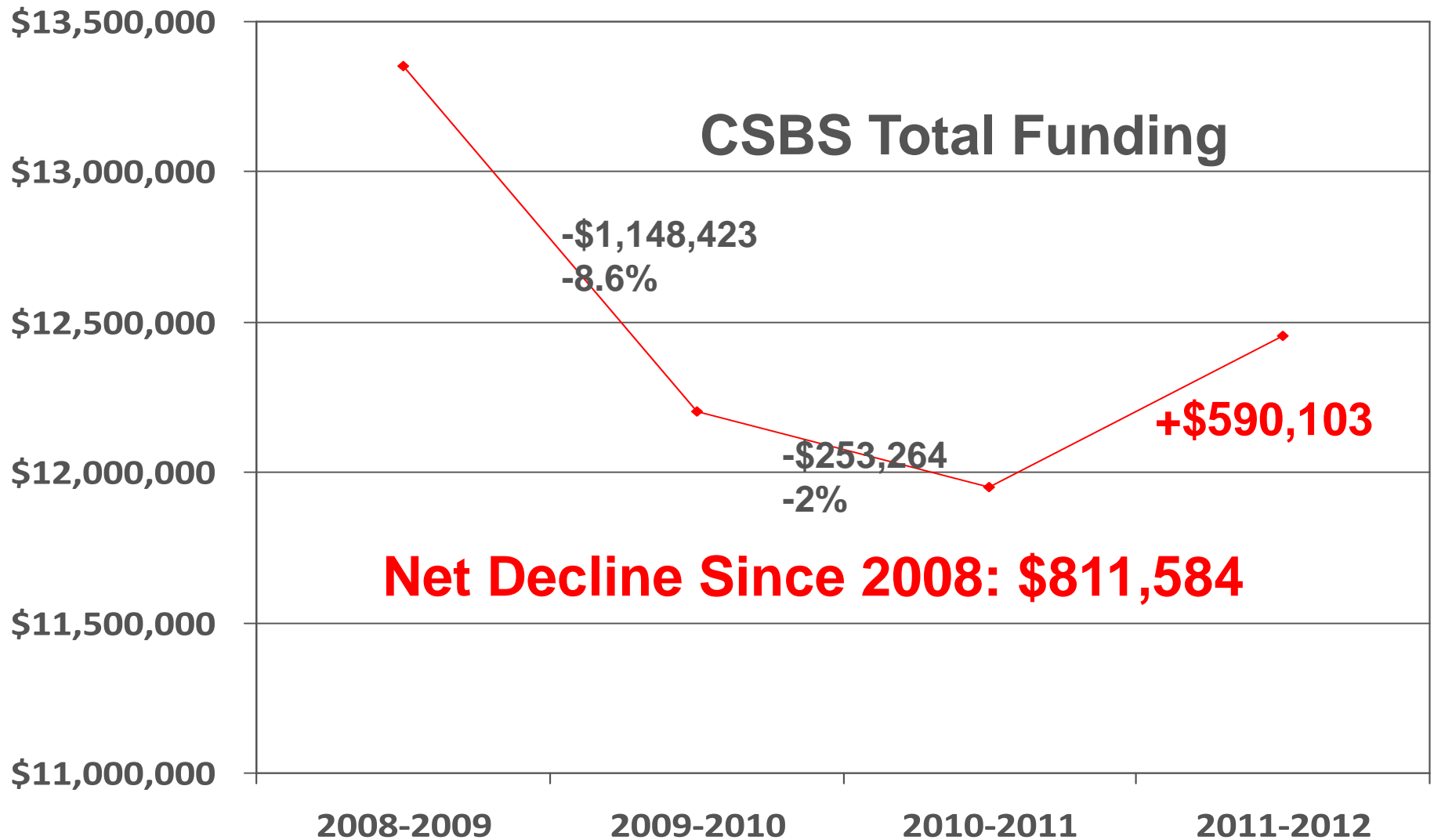
- [Chairs and Directors Meeting Minutes: March 31, 2011](#)
- [College-wide Faculty Meeting Presentation: March 28, 2011](#)
- [Academic Reputation and Athletic Affiliation Presentation](#)
- [University of Utah Startups and Technology Development](#)

All CSBS Newsletters

- [Click here for full archive](#)

CSBS Calendar

- [2011-2012 Academic Year Calendar](#)





Carry Forward Funds 2011-2012

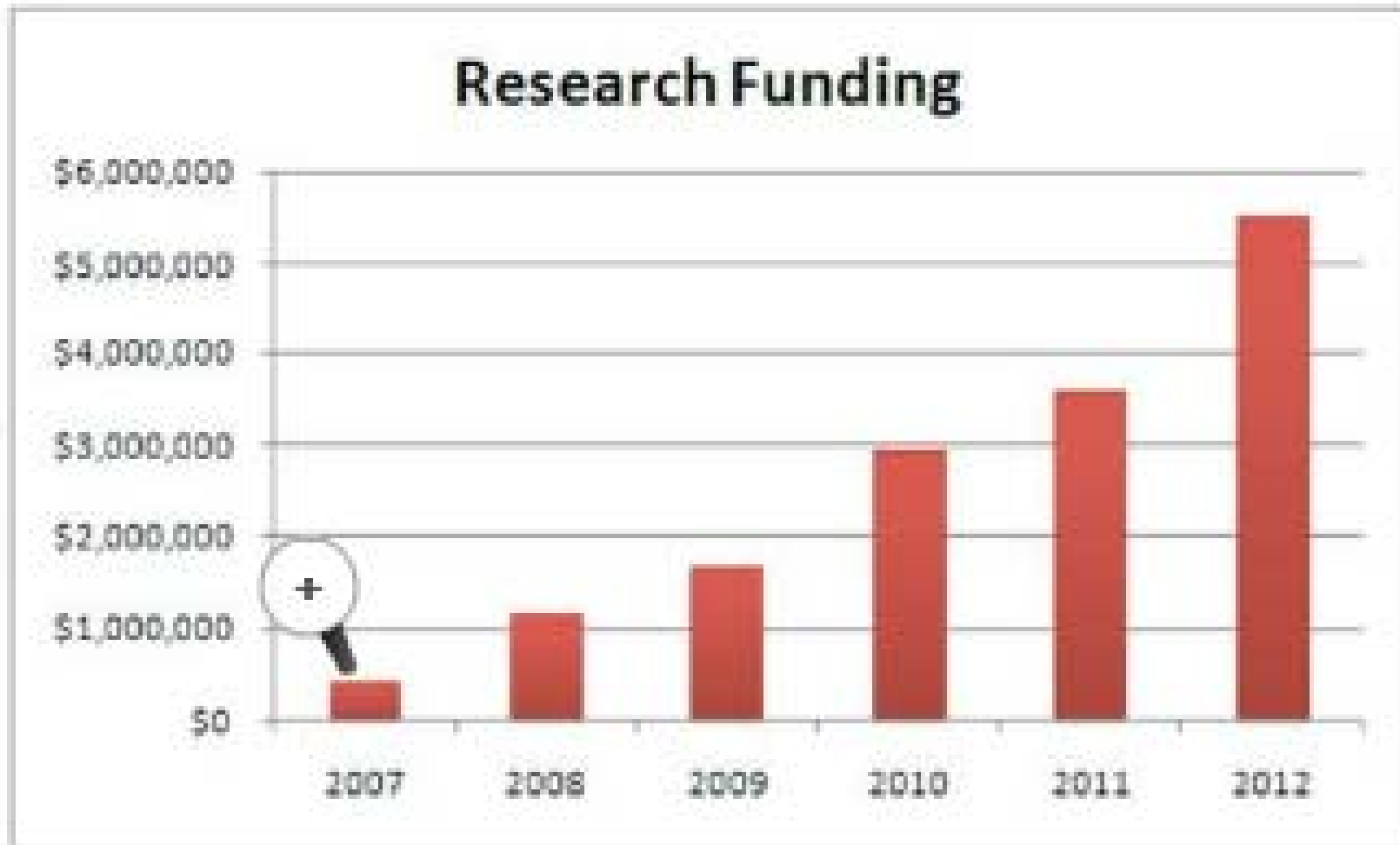
- Total across college: **\$1,616,219**
 - All but one department/unit with surplus
 - One department in deficit

New Funds in 2011-2012

- New Productivity Growth: \$482,359
- Faculty Salaries: \$221,000
- Staff Salaries: \$80,000
- Graduation Funding: \$343,103
- Office of Research Administration: \$84,150
- **Budget cut absorbed centrally: \$54,000**
- **Total increase in base funding: \$590,103**
- **Total new funds: \$1,156,612**

Faculty Salaries and Strategic Reinvestment

- Merit equity increases in two departments
- Limited merit across all departments, units
- Bonuses in 5 out of 7 departments
 - One-time allocation, reinvestment of surplus
- Reinvestment of carry-forward in infrastructure
 - 4 departments one additional unit
 - Computers, furnishings, upgrades



Impact of Research Incentive

- Implications
 - Proposals submitted
 - 2008-2009: **\$15,362,954**
 - 2009-2010: **\$30,308,563** (98% increase)
 - 2010-2011: **\$31,619,369**
 - **Hit rate more than doubled this year**

Returned Overhead to College

- **\$ 857,494.59 X .15 = \$125,794**
- **Distribution to departments: 50%**
 - **\$62,897**
- **Retained in college : 50%**
 - **\$62,897**
 - **Start-up and research incentive program**



Will be close to PAC-12 Average Next Year

- **If at average for Pac-12**
 - Total returned overhead/year: **\$1,872,820**
 - Returned overhead to college: **\$280,923**
 - Distributed to departments: **\$140,461**
 - Retained in college: **\$140,461**

Funding 2011-2012

- Psychology
 - Highly scored grants totaling \$12 Million +
 - Partnership with AAA Foundation in development
- FCS
 - Barbara Brown project funded at \$2.9 Million
- DoD Funding
 - Partner in \$12 Million DoD consortium

Distribution of Funds in College

- Political Science
 - Supplement to partially funded line
 - Supplemented Maxwell chair to facilitate hire
 - Absorbed line for merit pay
- Psychology
 - Supplemented absorbed line for equity and merit pay
 - Additional funds for TA stipends

- Geography
 - Funded faculty line
- Anthropology
 - Funds available to supplement current hiring or shared line
- Sociology
 - Funds available for hiring external chair
 - Shared position with gender studies
 - New position from Japan Foundation grant

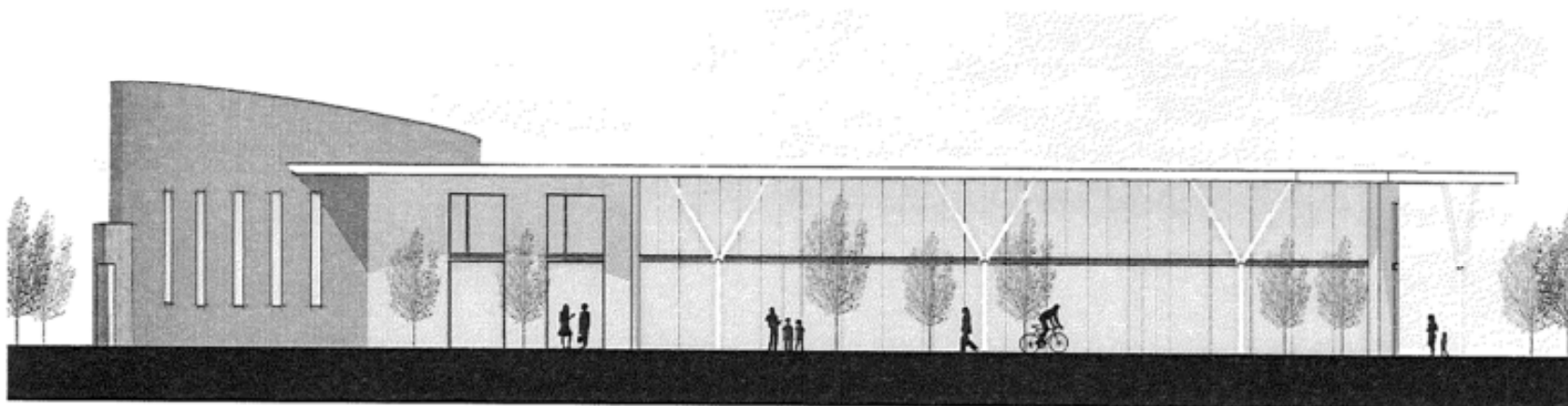
- FCS
 - New part-time tenure line position
 - Shared auxiliary position with COE
- Economics
 - Returned most of previously lost base funds
- Sustainability and Environmental Studies
 - First ever faculty line, shared position with Humanities

Priorities

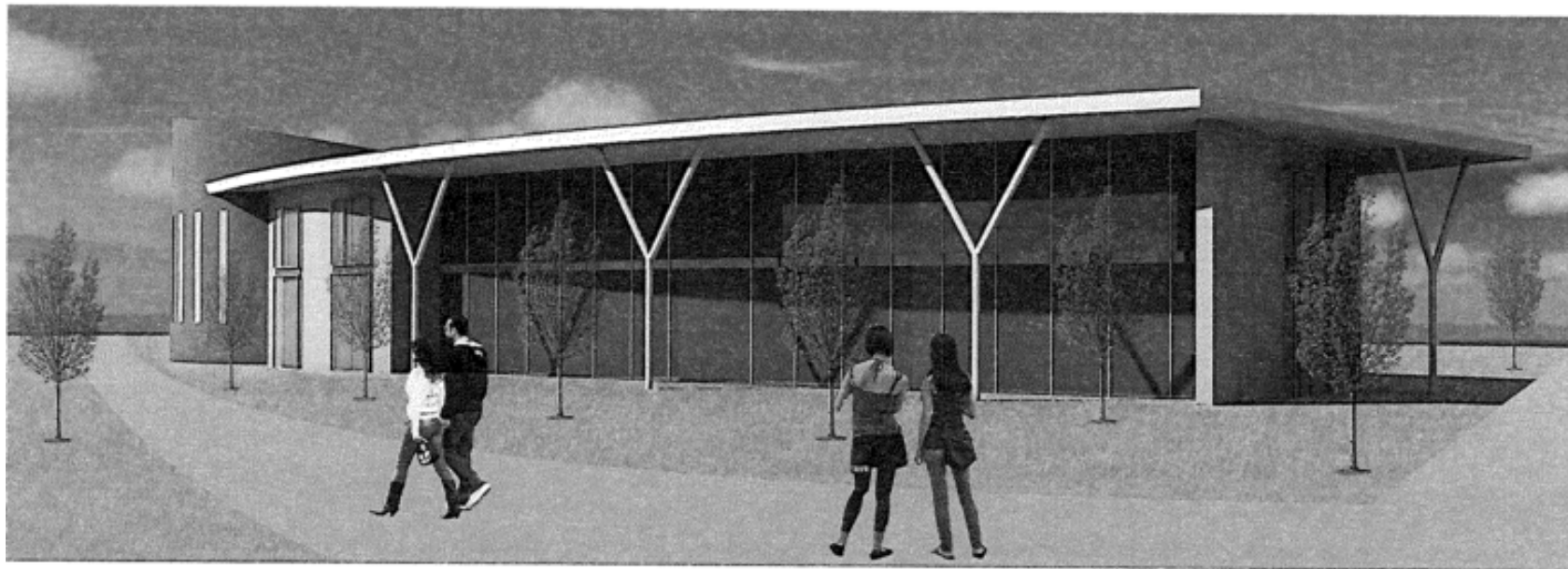
- Targeted Merit and Equity Pay in Departments and Units
 - Research productivity
 - Expansion of SCH productivity, recognition and reward
 - Recognition of service
- Development of targeted faculty positions (based on department performance)
- Development of research infrastructure and productivity
 - Office of Research Administration
- Reconnecting with undergraduate base
 - Student Ambassador Program
 - Student Focus Groups, Welcome and Graduation Events
- Broad development activities for college

Strategic Planning

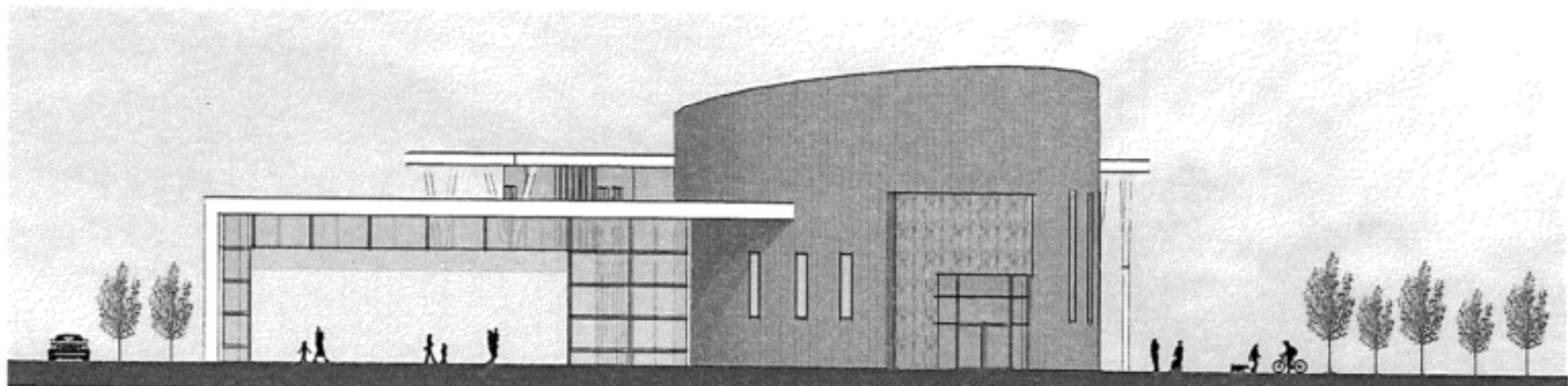
- Domains
 - Teaching effectiveness
 - Research productivity
 - Student outreach
 - Exceptional student experience
 - Strategic communications
 - Development
 - Scholarship endowments
 - Building campaign
 - Professorships



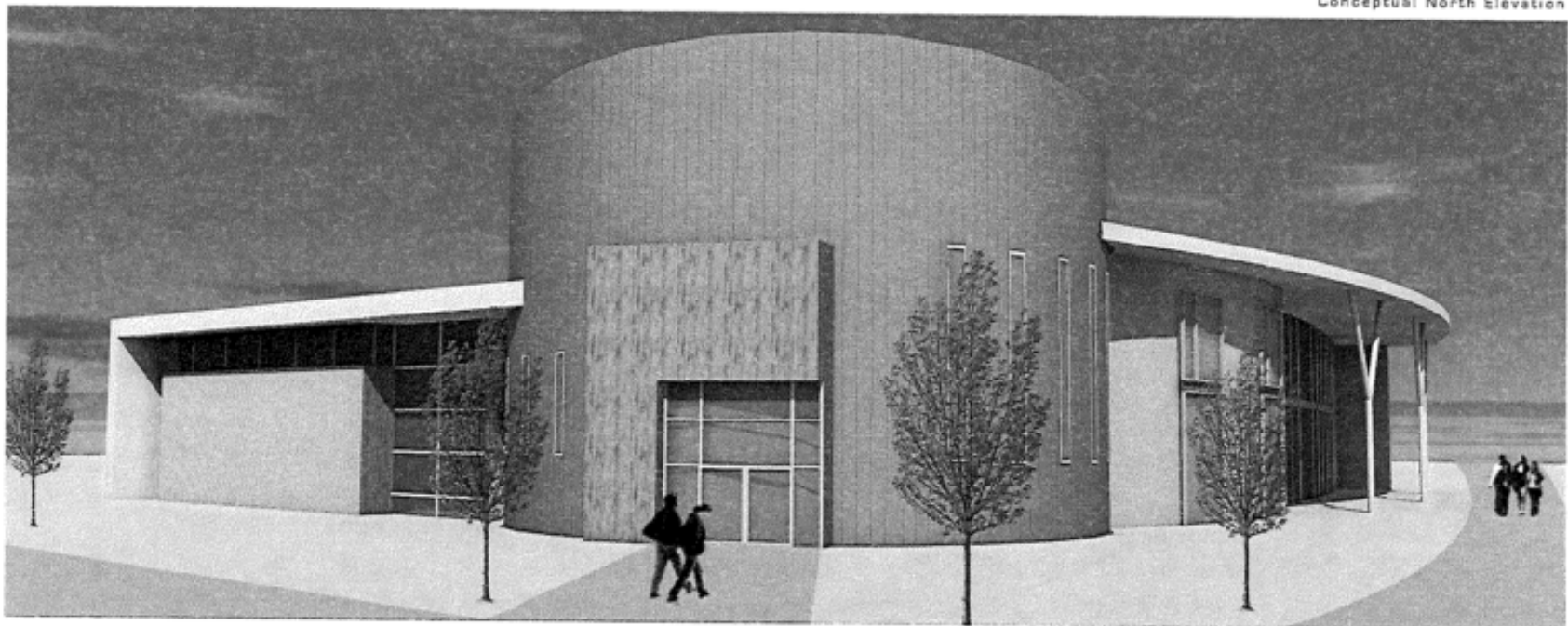
Conceptual West Elevation



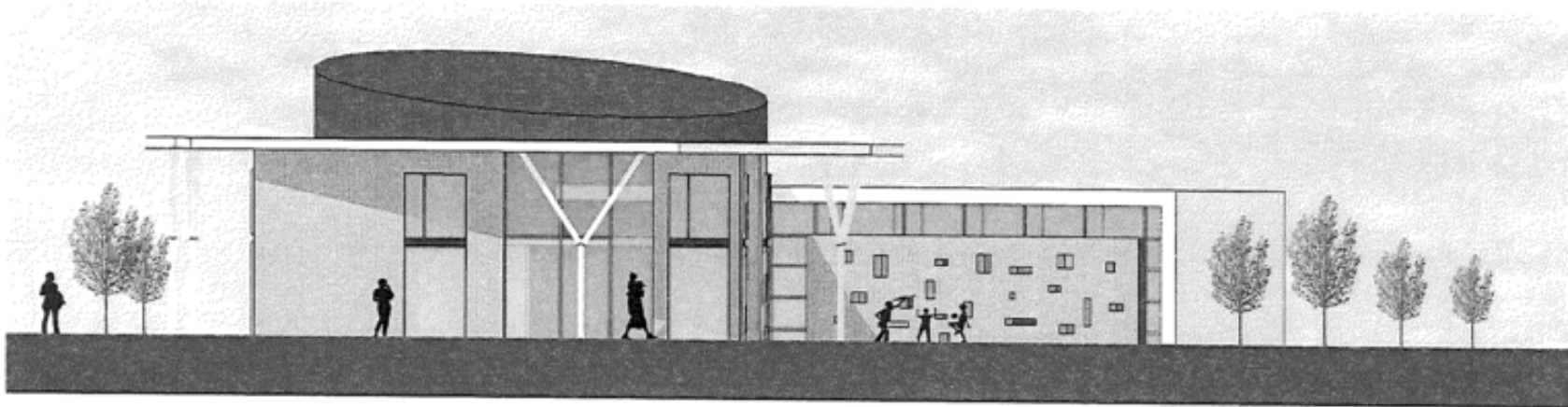
Conceptual Rendering



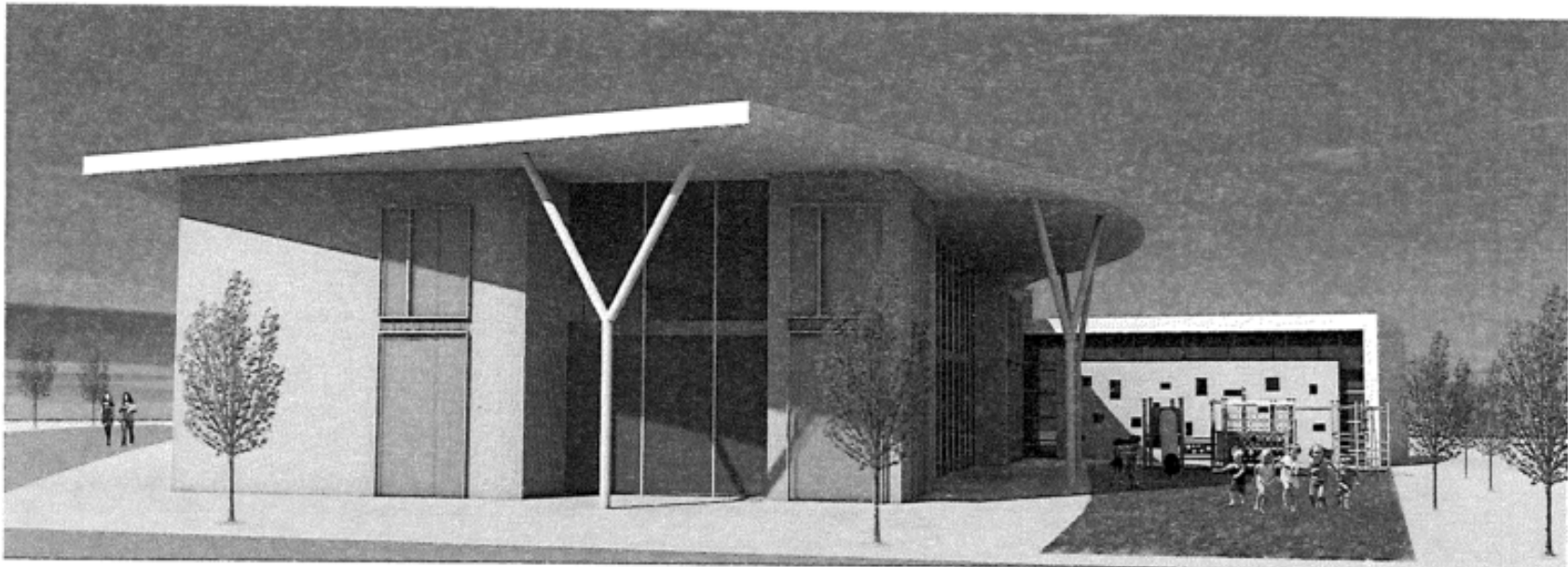
Conceptual North Elevation



Conceptual Rendering



Conceptual South Elevation



Conceptual Rendering